

## Prognostic gene expression signature for high-grade serous ovarian cancer

AOCS Group; Millstein, J.; Budden, T.; Goode, E. L.; Anglesio, M. S.; Talhouk, A.; Intermaggio, M. P.; Leong, H. S.; Chen, S.; Elatre, W.; Gilks, B.; Nazeran, T.; Volchek, M.; Links, M.; Hill, J.; Brown, B.

*Published in:*  
Annals of Oncology

*DOI:*  
[10.1016/j.annonc.2020.05.019](https://doi.org/10.1016/j.annonc.2020.05.019)

*Licence:*  
CC BY-NC-ND

[Link to output in Bond University research repository.](#)

### *Recommended citation(APA):*

AOCS Group, Millstein, J., Budden, T., Goode, E. L., Anglesio, M. S., Talhouk, A., Intermaggio, M. P., Leong, H. S., Chen, S., Elatre, W., Gilks, B., Nazeran, T., Volchek, M., Links, M., Hill, J., & Brown, B. (2020). Prognostic gene expression signature for high-grade serous ovarian cancer. *Annals of Oncology*, 31(9), 1240-1250. <https://doi.org/10.1016/j.annonc.2020.05.019>

### **General rights**

Copyright and moral rights for the publications made accessible in the public portal are retained by the authors and/or other copyright owners and it is a condition of accessing publications that users recognise and abide by the legal requirements associated with these rights.

For more information, or if you believe that this document breaches copyright, please contact the Bond University research repository coordinator.

ORIGINAL ARTICLE

# Prognostic gene expression signature for high-grade serous ovarian cancer

J. Millstein<sup>1</sup>, T. Budden<sup>2,3</sup>, E. L. Goode<sup>4</sup>, M. S. Anglesio<sup>5,6,7</sup>, A. Talhouk<sup>5,7</sup>, M. P. Intermaggio<sup>2</sup>, H. S. Leong<sup>8</sup>, S. Chen<sup>9</sup>, W. Elatré<sup>10</sup>, B. Gilks<sup>5,6</sup>, T. Nazaran<sup>5</sup>, M. Volchek<sup>11</sup>, R. C. Bentley<sup>12</sup>, C. Wang<sup>13</sup>, D. S. Chiu<sup>5</sup>, S. Kommoss<sup>14</sup>, S. C. Y. Leung<sup>5</sup>, J. Senz<sup>5,6</sup>, A. Lum<sup>5</sup>, V. Chow<sup>5</sup>, H. Sudderuddin<sup>5</sup>, R. Mackenzie<sup>5</sup>, J. George<sup>15</sup>, AOCs Group<sup>8,16,17†</sup>, S. Fereday<sup>8,18</sup>, J. Hendley<sup>8,18</sup>, N. Traficante<sup>8,18</sup>, H. Steed<sup>19</sup>, J. M. Koziak<sup>20</sup>, M. Köbel<sup>21</sup>, I. A. McNeish<sup>22,23</sup>, T. Goranova<sup>24</sup>, D. Ennis<sup>22,23</sup>, G. Macintyre<sup>24</sup>, D. Silva De Silva<sup>24</sup>, T. Ramón y Cajal<sup>25</sup>, J. García-Donas<sup>26</sup>, S. Hernando Polo<sup>27</sup>, G. C. Rodriguez<sup>28</sup>, K. L. Cushing-Haugen<sup>29</sup>, H. R. Harris<sup>29,30</sup>, C. S. Greene<sup>31</sup>, R. A. Zelaya<sup>32</sup>, S. Behrens<sup>33</sup>, R. T. Fortner<sup>33</sup>, P. Sinn<sup>34</sup>, E. Herpel<sup>34,35</sup>, J. Lester<sup>36,37</sup>, J. Lubiński<sup>38</sup>, O. Oszurek<sup>38</sup>, A. Tołoczko<sup>38</sup>, C. Cybulski<sup>38</sup>, J. Menkiszak<sup>39</sup>, C. L. Pearce<sup>40,41</sup>, M. C. Pike<sup>41,42</sup>, C. Tseng<sup>43</sup>, J. Alsop<sup>44</sup>, V. Rhenius<sup>44</sup>, H. Song<sup>44</sup>, M. Jimenez-Linan<sup>45</sup>, A. M. Piskorz<sup>24</sup>, A. Gentry-Maharaj<sup>46</sup>, C. Karpinskyj<sup>46</sup>, M. Widschwendter<sup>47</sup>, N. Singh<sup>48</sup>, C. J. Kennedy<sup>17,49</sup>, R. Sharma<sup>50,51</sup>, P. R. Harnett<sup>17,52</sup>, B. Gao<sup>17,52</sup>, S. E. Johnatty<sup>16</sup>, R. Sayer<sup>49</sup>, J. Boros<sup>17,49</sup>, S. J. Winham<sup>13</sup>, G. L. Keeney<sup>53</sup>, S. H. Kaufmann<sup>54,55</sup>, M. C. Larson<sup>13</sup>, H. Luk<sup>56</sup>, B. Y. Hernandez<sup>56</sup>, P. J. Thompson<sup>57</sup>, L. R. Wilkens<sup>56</sup>, M. E. Carney<sup>58</sup>, B. Trabert<sup>59</sup>, J. Lissowska<sup>60</sup>, L. Brinton<sup>59</sup>, M. E. Sherman<sup>61</sup>, C. Bodelon<sup>59</sup>, S. Hinsley<sup>62</sup>, L. A. Lewsley<sup>62</sup>, R. Glasspool<sup>63</sup>, S. N. Banerjee<sup>64</sup>, E. A. Stronach<sup>22</sup>, P. Haluska<sup>54</sup>, I. Ray-Coquard<sup>65</sup>, S. Mahner<sup>66</sup>, B. Winterhoff<sup>67</sup>, D. Slamon<sup>68</sup>, D. A. Levine<sup>69,70</sup>, L. E. Kelemen<sup>71</sup>, J. Benitez<sup>72,73</sup>, J. Chang-Claude<sup>33,74</sup>, J. Gronwald<sup>38</sup>, A. H. Wu<sup>43</sup>, U. Menon<sup>46</sup>, M. T. Goodman<sup>57</sup>, J. M. Schildkraut<sup>75</sup>, N. Wentzensen<sup>59</sup>, R. Brown<sup>76</sup>, A. Berchuck<sup>77</sup>, G. Chenevix-Trench<sup>16</sup>, A. deFazio<sup>17,49</sup>, S. A. Gayther<sup>78</sup>, M. J. García<sup>73,79</sup>, M. J. Henderson<sup>80</sup>, M. A. Rossing<sup>29,30</sup>, A. Beeghly-Fadiel<sup>81</sup>, P. A. Fasching<sup>68,82</sup>, S. Orsulic<sup>36,37</sup>, B. Y. Karlan<sup>36,37</sup>, G. E. Konecny<sup>68</sup>, D. G. Huntsman<sup>5,6,7,83</sup>, D. D. Bowtell<sup>8,18</sup>, J. D. Brenton<sup>24</sup>, J. A. Doherty<sup>84</sup>, P. D. P. Pharoah<sup>44,85</sup> & S. J. Ramus<sup>2,86\*</sup>

<sup>1</sup>Division of Biostatistics, Department of Preventive Medicine, Keck School of Medicine, University of Southern California, Los Angeles, USA; <sup>2</sup>School of Women's and Children's Health, Faculty of Medicine, University of NSW Sydney, Sydney, Australia; <sup>3</sup>CRUK Manchester Institute, The University of Manchester, Manchester, UK; <sup>4</sup>Department of Health Science Research, Division of Epidemiology, Mayo Clinic, Rochester, USA; <sup>5</sup>British Columbia's Ovarian Cancer Research (OVCARE) Program, BC Cancer, Vancouver General Hospital, and the University of British Columbia, Vancouver; <sup>6</sup>Department of Pathology and Laboratory Medicine, University of British Columbia, Vancouver; <sup>7</sup>Department of Obstetrics and Gynecology, University of British Columbia, Vancouver, Canada; <sup>8</sup>Peter MacCallum Cancer Center, Melbourne, Australia; <sup>9</sup>Center for Cancer Prevention and Translational Genomics, Samuel Oschin Comprehensive Cancer Institute, Cedars-Sinai Medical Center, Los Angeles; <sup>10</sup>Department of Pathology, Norris Comprehensive Cancer Center, Keck School of Medicine, University of Southern California, USA; <sup>11</sup>Anatomical Pathology, Royal Women's Hospital, Parkville, Australia; <sup>12</sup>Department of Pathology, Duke University Hospital, Durham; <sup>13</sup>Department of Health Science Research, Division of Biomedical Statistics and Informatics, Mayo Clinic, Rochester, USA; <sup>14</sup>Department of Women's Health, Tuebingen University Hospital, Tuebingen, Germany; <sup>15</sup>The Jackson Laboratory for Genomic Medicine, Farmington, USA; <sup>16</sup>Department of Genetics and Computational Biology, QIMR Berghofer Medical Research Institute, Brisbane, Queensland; <sup>17</sup>Centre for Cancer Research, The Westmead Institute for Medical Research, The University of Sydney, Sydney; <sup>18</sup>Sir Peter MacCallum Department of Oncology, The University of Melbourne, Parkville, Australia; <sup>19</sup>Department of Obstetrics and Gynecology, Division of Gynecologic Oncology, Royal Alexandra Hospital, Edmonton; <sup>20</sup>Alberta Health Services-Cancer Care, Calgary; <sup>21</sup>Department of Pathology and Laboratory Medicine, University of Calgary, Foothills Medical Center, Calgary, Canada; <sup>22</sup>Division of Cancer and Ovarian Cancer Action Research Centre, Department Surgery & Cancer, Imperial College London, London; <sup>23</sup>Institute of Cancer Sciences, University of Glasgow, Glasgow; <sup>24</sup>Cancer Research UK Cambridge Institute, University of Cambridge, Cambridge, UK; <sup>25</sup>Medical Oncology Service, Hospital Sant Pau, Barcelona; <sup>26</sup>HM Hospitales D Centro Integral Oncológico HM Clara Campal, Madrid; <sup>27</sup>Medical Oncology Service, Hospital Universitario Funcion Alcorcón, Alcorcón, Spain; <sup>28</sup>Division of Gynecologic Oncology, NorthShore University HealthSystem, University of Chicago, Evanston; <sup>29</sup>Program in Epidemiology, Division of Public Health Sciences, Fred Hutchinson Cancer Research Center, Seattle; <sup>30</sup>Department of Epidemiology, University of Washington, Seattle; <sup>31</sup>Department of Systems Pharmacology and Translational Therapeutics, Perelman School of Medicine, University of Pennsylvania, Philadelphia; <sup>32</sup>Department of Genetics, Geisel School of Medicine at Dartmouth, Hanover, USA; <sup>33</sup>Division of Cancer Epidemiology, German Cancer Research Center (DKFZ), Heidelberg; <sup>34</sup>Department of Pathology, Institute of Pathology, University Hospital Heidelberg, Heidelberg; <sup>35</sup>National Center for Tumor Diseases, University Hospital and German Cancer Research Center, Heidelberg, Germany; <sup>36</sup>David Geffen School of Medicine, Department of Obstetrics and Gynecology, University of California at Los Angeles, Los Angeles; <sup>37</sup>Women's Cancer Program at the Samuel Oschin Comprehensive Cancer Institute, Cedars-Sinai Medical Center, Los Angeles, USA; <sup>38</sup>Department of Genetics and Pathology, Pomeranian Medical University, Szczecin; <sup>39</sup>Department of Gynecological Surgery and Gynecological Oncology of Adults and Adolescents, Pomeranian Medical University, Szczecin, Poland; <sup>40</sup>Department of Epidemiology, University of Michigan School of Public Health, Ann Arbor; <sup>41</sup>Department of Preventive Medicine, Keck School of Medicine, University of Southern California Norris Comprehensive Cancer Center, Los Angeles; <sup>42</sup>Department of Epidemiology and Biostatistics, Memorial Sloan-Kettering Cancer Center, New York; <sup>43</sup>Department of Preventive Medicine, Keck School of Medicine, University of Southern California, Los Angeles, USA; <sup>44</sup>Centre for Cancer Genetic Epidemiology, Department of Oncology, University of Cambridge, Cambridge; <sup>45</sup>Department of Pathology, Addenbrooke's Hospital NHS Trust, Cambridge; <sup>46</sup>MRC Clinical Trials Unit at UCL, Institute of Clinical Trials & Methodology, University College London, London; <sup>47</sup>Department of Women's Cancer, Institute for Women's Health, University College London, London; <sup>48</sup>Department of Pathology, Barts Health National Health Service Trust, London, UK; <sup>49</sup>Department of Gynaecological Oncology, Westmead Hospital, Sydney; <sup>50</sup>Pathology West ICPMR Westmead, Westmead Hospital, The University of Sydney, Sydney; <sup>51</sup>University of Western Sydney at Westmead Hospital, Sydney; <sup>52</sup>The Crown Princess Mary Cancer Centre Westmead, Sydney-West Cancer Network, Westmead Hospital, Sydney, Australia; <sup>53</sup>Department of Laboratory Medicine and Pathology, Division of Anatomic Pathology, Mayo Clinic, Rochester; <sup>54</sup>Department of Oncology, Mayo Clinic,

\*Correspondence to: Prof. Susan Ramus, School of Women's and Children's Health, Faculty of Medicine, Lowy Building, 2nd floor, UNSW Sydney, NSW 2052, Australia. Tel: +61-02-9385-1720  
E-mail: [s.ramus@unsw.edu.au](mailto:s.ramus@unsw.edu.au) (S.J. Ramus).

†The AOCs Study members are listed in full in [Appendix 1](#).  
0923-7534/© 2020 The Authors. Published by Elsevier Ltd on behalf of European Society for Medical Oncology. This is an open access article under the CC BY-NC-ND license (<http://creativecommons.org/licenses/by-nc-nd/4.0/>).

Rochester; <sup>55</sup>Department of Molecular Pharmacology and Experimental Therapeutics, Mayo Clinic, Rochester; <sup>56</sup>Cancer Epidemiology Program, University of Hawaii Cancer Center, Honolulu; <sup>57</sup>Samuel Oschin Comprehensive Cancer Institute, Cancer Prevention and Genetics Program, Cedars-Sinai Medical Center, Los Angeles; <sup>58</sup>John A. Burns School of Medicine, Department of Obstetrics and Gynecology, University of Hawaii, Honolulu; <sup>59</sup>Division of Cancer Epidemiology and Genetics, National Cancer Institute, Bethesda, USA; <sup>60</sup>Department of Cancer Epidemiology and Prevention, M Skłodowska Curie National Research Institute of Oncology, Warsaw, Poland; <sup>61</sup>Department of Health Sciences Research, Mayo Clinic College of Medicine, Jacksonville, USA; <sup>62</sup>Cancer Research UK Clinical Trials Unit, Institute of Cancer Sciences, University of Glasgow, Glasgow; <sup>63</sup>Department of Medical Oncology, Beatson West of Scotland Cancer Centre and University of Glasgow, Glasgow; <sup>64</sup>The Royal Marsden NHS Foundation Trust and Institute of Cancer Research, London, UK; <sup>65</sup>Centre Leon Berard and University Claude Bernard Lyon 1, Lyon, France; <sup>66</sup>Department of Obstetrics and Gynecology, University Hospital, LMU Munich, Munich, Germany; <sup>67</sup>Department of Obstetrics, Gynecology and Women's Health, University of Minnesota, Minneapolis; <sup>68</sup>David Geffen School of Medicine, Department of Medicine Division of Hematology and Oncology, University of California at Los Angeles, Los Angeles; <sup>69</sup>Gynecology Service, Department of Surgery, Memorial Sloan Kettering Cancer Center, New York; <sup>70</sup>Gynecologic Oncology, Laura and Isaac Pearlmuter Cancer Center, NYU Langone Medical Center, New York; <sup>71</sup>Hollings Cancer Center and Department of Public Health Sciences, Medical University of South Carolina, Charleston, USA; <sup>72</sup>Centro de Investigación en Red de Enfermedades Raras (CIBERER), Madrid; <sup>73</sup>Human Cancer Genetics Programme, Spanish National Cancer Research Centre (CNIO), Madrid, Spain; <sup>74</sup>Cancer Epidemiology Group, University Cancer Center Hamburg (UCC), University Medical Center Hamburg-Eppendorf, Hamburg, Germany; <sup>75</sup>Department of Epidemiology, Rollins School of Public Health, Emory University, Atlanta, USA; <sup>76</sup>Division of Cancer and Ovarian Cancer Action Research Centre, Department of Surgery and Cancer, Imperial College London, London, UK; <sup>77</sup>Department of Gynecologic Oncology, Duke University Hospital, Durham, USA; <sup>78</sup>Center for Bioinformatics and Functional Genomics and the Cedars Sinai Genomics Core, Cedars-Sinai Medical Center, Los Angeles, USA; <sup>79</sup>Biomedical Network on Rare Diseases (CIBERER), Madrid, Spain; <sup>80</sup>Children's Cancer Institute, Lowy Cancer Research Centre, University of NSW Sydney, Sydney, Australia; <sup>81</sup>Division of Epidemiology, Department of Medicine, Vanderbilt Epidemiology Center, Vanderbilt-Ingram Cancer Center, Vanderbilt University School of Medicine, Nashville, USA; <sup>82</sup>Department of Gynecology and Obstetrics, Comprehensive Cancer Center ER-EMN, University Hospital Erlangen, Friedrich-Alexander-University Erlangen-Nuremberg, Erlangen, Germany; <sup>83</sup>Department of Molecular Oncology, BC Cancer Research Centre, Vancouver, Canada; <sup>84</sup>Huntsman Cancer Institute, Department of Population Health Sciences, University of Utah, Salt Lake City, USA; <sup>85</sup>Centre for Cancer Genetic Epidemiology, Department of Public Health and Primary Care, University of Cambridge, Cambridge, UK; <sup>86</sup>Adult Cancer Program, Lowy Cancer Research Centre, University of NSW Sydney, Sydney, Australia



Available online 28 May 2020

**Background:** Median overall survival (OS) for women with high-grade serous ovarian cancer (HGSOC) is ~4 years, yet survival varies widely between patients. There are no well-established, gene expression signatures associated with prognosis. The aim of this study was to develop a robust prognostic signature for OS in patients with HGSOC.

**Patients and methods:** Expression of 513 genes, selected from a meta-analysis of 1455 tumours and other candidates, was measured using NanoString technology from formalin-fixed paraffin-embedded tumour tissue collected from 3769 women with HGSOC from multiple studies. Elastic net regularization for survival analysis was applied to develop a prognostic model for 5-year OS, trained on 2702 tumours from 15 studies and evaluated on an independent set of 1067 tumours from six studies.

**Results:** Expression levels of 276 genes were associated with OS (false discovery rate < 0.05) in covariate-adjusted single-gene analyses. The top five genes were *TAP1*, *ZFHX4*, *CXCL9*, *FBN1* and *PTGER3* ( $P < 0.001$ ). The best performing prognostic signature included 101 genes enriched in pathways with treatment implications. Each gain of one standard deviation in the gene expression score conferred a greater than twofold increase in risk of death [hazard ratio (HR) 2.35, 95% confidence interval (CI) 2.02–2.71;  $P < 0.001$ ]. Median survival [HR (95% CI)] by gene expression score quintile was 9.5 (8.3 to –), 5.4 (4.6–7.0), 3.8 (3.3–4.6), 3.2 (2.9–3.7) and 2.3 (2.1–2.6) years.

**Conclusion:** The OTTA-SPOT (Ovarian Tumor Tissue Analysis consortium - Stratified Prognosis of Ovarian Tumours) gene expression signature may improve risk stratification in clinical trials by identifying patients who are least likely to achieve 5-year survival. The identified novel genes associated with the outcome may also yield opportunities for the development of targeted therapeutic approaches.

**Key words:** formalin-fixed paraffin-embedded, gene expression, high-grade serous ovarian cancer, overall survival, prognosis

## INTRODUCTION

Epithelial ovarian cancer (EOC) causes ~125 000 deaths globally every year, and long-term survival rates have changed little in the past three decades.<sup>1</sup> Approximately 70% of women with EOC are diagnosed with advanced stage disease (stages III/IV), and fewer than 50% will survive more than 5 years.<sup>2</sup> There are five major EOC histotypes: high-grade serous, low-grade serous, endometrioid, clear cell and mucinous.<sup>3</sup> High-grade serous ovarian cancer (HGSOC) comprises about two-thirds of cases, is responsible for most deaths and is characterized by profound genomic and clinical heterogeneity.

The most informative prognostic factors for HGSOC are International Federation of Gynecology and Obstetrics (FIGO) stage, residual disease following debulking surgery,<sup>4</sup> *BRCA1* or *BRCA2* germline mutation<sup>5,6</sup> and tumour-infiltrating lymphocyte scores.<sup>7,8</sup> Patients with HGSOC who carry a loss-of-function germline mutation in *BRCA1* or *BRCA2* have an increased sensitivity to platinum-based chemotherapy and PARP inhibitor treatment<sup>9,10</sup> and a medium-term survival advantage.<sup>5</sup> However, the frequent development of drug-resistant disease<sup>6</sup> limits the effectiveness of current therapies.

Gene expression data have been used to define four tumour molecular subtypes of HGSOC (C1/mesenchymal, C2/immune, C4/differentiated and C5/proliferative).<sup>11,12</sup>

Using transcriptome-wide data from fresh frozen tissues, The Cancer Genome Atlas (TCGA) project used 215 tumours to identify an overall survival (OS) expression signature of 193 genes that has been validated on three other HGSOC gene expression datasets.<sup>12</sup>

Despite these findings, gene expression biomarkers have not been implemented clinically owing to several important shortcomings. The majority of the individual markers comprising the 193 gene signature were not statistically significant across all studies, suggesting that the signature may not be robust. The sample sizes in other discovery efforts have been too small for robust statistical inference.<sup>12</sup> In addition, previous studies used fresh frozen samples, resulting in logistic and cost barriers to examining large clinically relevant datasets, and translation to the clinical setting.

The aim of this study was to identify a robust and clinic-ready prognostic HGSOC profile that can be applied to formalin-fixed paraffin-embedded (FFPE) tumour tissue.

## PATIENTS AND METHODS

Twenty studies provided pretreatment FFPE tumour samples from 4071 women diagnosed with HGSOC (supplementary Table S1, available at *Annals of Oncology* online). All HGSOC cases with available tissue were included. During this period, patients with HGSOC were treated with chemotherapy (carboplatin and paclitaxel) after primary debulking surgery. Study protocols were approved by the respective Institutional Review Board/Ethics Approval Committee for each site (supplementary Table S1, available at *Annals of Oncology* online).

A schematic of the overall study design is shown in Figure 1. There were four main components: gene selection, gene expression assay, development of prognostic gene signature in a training set and validation of prognostic signature in an independent validation set.

### Gene selection

Candidate prognostic genes were identified by carrying out an individual participant meta-analysis of six transcriptome-wide microarray studies,<sup>11–16</sup> which included tumour samples from 1455 participants. Association of gene expression with OS was evaluated by Cox proportional hazards regression adjusted for molecular subtype (supplementary Table S2, available at *Annals of Oncology* online). In total, 200 genes from the meta-analysis, most achieving a permutation-based false discovery rate (FDR)<sup>17</sup> of <0.05, and an additional 313 candidate genes based on the literature and unpublished data were selected (supplementary Tables S3 and S4, and supplementary Figure S1, available at *Annals of Oncology* online; for more details see supplementary Material, available at *Annals of Oncology* online). Five genes, *RPL19*, *ACTB*, *PGK1*, *SDHA* and *POLR1B*, were included as house-keeping genes for normalization.

### Gene expression assay in tumour samples from study participants

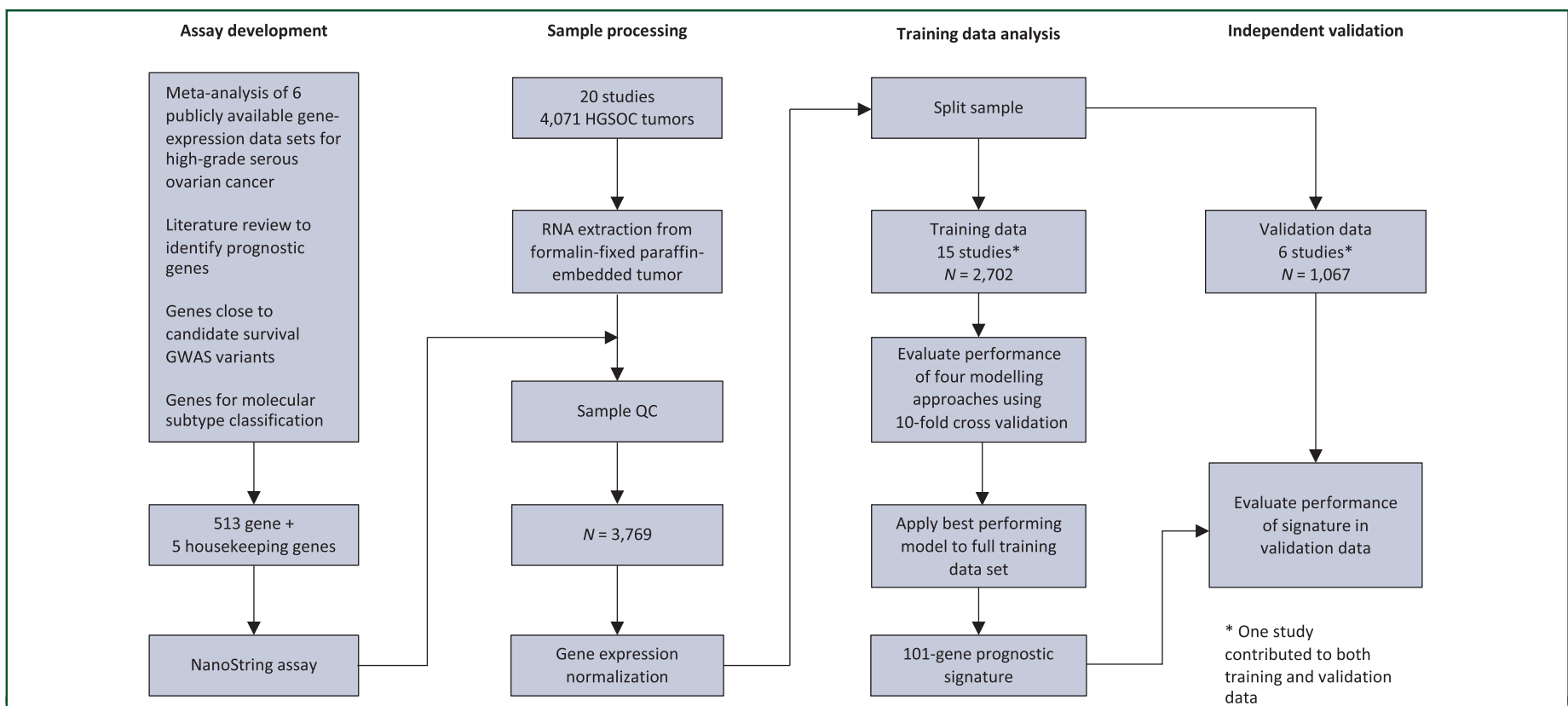
FFPE tumour samples were processed with the NanoString nCounter technology at three different locations: Vancouver, Los Angeles and Melbourne. A control set of 48 FFPE tumour samples was run at each location and the average intraclass correlation coefficient was 0.987. Approximately 2% of the samples were run in duplicate and the average Spearman's correlation coefficient  $r_s$  was 0.995. Single-patient classification methods were used with reference samples to control for batch effects.<sup>18</sup> The data in this publication have been deposited in NCBI's Gene Expression Omnibus<sup>19</sup>; GEO Series accession number GSE132342 (<https://www.ncbi.nlm.nih.gov/geo/query/acc.cgi?acc=GSE132342>). A total of 3329 samples passed quality control of which 3769 had survival data and assessable gene expression for 513 genes. Data can be found in NCBI GEO: Accession numbers GSE132342 and GPL26748.

### Overall survival analysis of individual genes

Samples that contributed to the meta-analysis dataset ( $n = 211$ ) were removed from subsequent selected analyses to enforce independence of study samples between the gene selection and final survival analysis. Time-to-event analyses were carried out for OS with right censoring at 10 years and left truncation of prevalent cases. Associations between log-transformed normalized gene expression and survival time were tested using likelihood ratio tests with Cox proportional hazards models adjusted for age, race and stage, and stratified by study. Patients with missing race or stage information were assigned to 'unknown' categories. Age was modelled using a B-spline with a knot at the median age, which yielded a better fit than using knots at quartiles or categorical variables. Stage was dichotomized into early (FIGO stage I/II) and advanced (FIGO stage III/IV). Genes were scaled to have a standard deviation of one, so hazard ratios (HRs) correspond to a change of one standard deviation. A Benjamini–Hochberg FDR of <0.05 was used to identify notable associations. Because the expression of genes can be correlated, an analysis of correlated genes was performed using data from TCGA. Advanced stage ovarian cancer usually has disease spread throughout the abdomen, and therefore sensitivity analyses were performed to assess effects of the anatomical location of tumour samples included in the study by removing observations corresponding to samples known to be extraovarian ( $n = 437$ ).

### Prognostic signature development and validation

Studies were initially randomized to training set ( $N = 14$ ) and validation set ( $N = 6$ ). The TRI study was randomized to the validation set, but, because 107 samples were part of the meta-analysis data used for gene selection, the study was split, so those 107 samples were included in the model training dataset. Thus 2702 samples from 15 studies were used for model training and 1067 samples from 6 studies were used for validation (supplementary Table S1, available at *Annals of Oncology* online). In the training set, four



**Figure 1. Schematic of study design.**

\*The TRI study was split across the training and validation sets due to 107 samples overlapping with the meta-analysis. GWAS, genome-wide association studies; HGSOC, high-grade serous ovarian cancer.



modelling approaches (stepwise regression, elastic net regularized regression, boosting and random survival forests) were applied to construct competing gene expression–based biomarkers. Each was evaluated in the training data using 10-fold cross-validation for its prognostic value for OS at 2 and 5 years of follow-up using an area under the curve (AUC) measure derived from receiver operator characteristic analysis (see [supplementary Material](#), available at *Annals of Oncology* online, for additional details). The best performing method, elastic net regularized regression, was applied to the full training set to determine the final gene signature and scoring method, which was then evaluated using the independent testing set. All models were constrained to include age and stage, where age was modelled as categorical based on quartiles of the training dataset with groups aged <53, 53–59, 60–66, and ≥67. Stage was modelled as described earlier for the OS individual gene analysis.

## RESULTS

### Association of expression of individual genes with OS in HGSOC

In a gene-by-gene analysis of the full dataset adjusted for age, race and stage, and stratified by study, 276 of the 513 selected genes were associated with OS (FDR < 0.05). Of these, 138 were selected from the meta-analysis of six published microarray studies ([supplementary Table S2](#), available at *Annals of Oncology* online)<sup>11–16</sup> and 144 from candidate gene approaches ([supplementary Tables S5 and S6](#), available at *Annals of Oncology* online). HRs for one standard deviation change in gene expression ranged from 0.84 to 1.19, with multiple genes exhibiting associations at very stringent significance levels (e.g. 19 genes with  $P < 1 \times 10^{-8}$ ; [supplementary Tables S5 and S6](#), available at *Annals of Oncology* online). The five most significant genes were *TAP1*, *ZFH4*, *CXCL9*, *FBN1* and *PTGER3* ([Table 1](#)). We did not find extensive evidence of high co-expression between these five genes and genes measured in TCGA project ([supplementary Table S7](#), available at *Annals of Oncology* online). In sensitivity analyses we found that excluding samples from omentum and other extra-ovarian sites did not substantially affect the results ([supplementary Tables S8 and S9](#), available at *Annals of Oncology* online).

### Development of a novel prognostic gene signature

The four predictive modelling approaches that were evaluated in the training data using 10-fold cross-validation yielded median AUCs that ranged from 0.69 to 0.73 for 2-year OS and 0.69 to 0.74 for 5-year survival ([supplementary Figure S2](#), available at *Annals of Oncology* online) with better prediction of 5-year OS than of 2-year OS. The elastic net approach yielded the highest median AUC for both 2- and 5-year OS and was selected for final development of the signature. Using the model on the full training dataset resulted in a prognostic signature of 101 genes in addition to age and stage ([supplementary Table S10](#), available at *Annals of Oncology* online). Of these, 66 genes were associated with OS (FDR < 0.05) in the single gene models. There was no obvious subset of signature genes that performed as well or nearly as well as the full 101 gene signature ([supplementary Figure S3](#), available at *Annals of Oncology* online).

Performance of the signature including age and stage was AUC 0.69 [95% confidence interval (CI) 0.65–0.73] and AUC 0.75 (95% CI 0.72–0.78) for 2- and 5-year OS, respectively ([Figures 2 and 3](#); [supplementary Figure S4](#), available at *Annals of Oncology* online). This was substantially better than age and stage alone with AUC 0.61 (95% CI 0.57–0.65) and AUC 0.62 (95% CI 0.59–0.67) for 2- and 5-year OS, respectively, particularly for the 5-year OS outcome with non-overlapping 95% CI. One standard deviation change in the gene expression score was associated with an HR of 2.35 [(95% CI 2.02–2.71);  $P = 5.1 \times 10^{-31}$ ], and median survival [HR (CI)] varied substantially across quintiles of the gene expression score [9.5 (8.3 to –), 5.4 (4.6–7.0), 3.8 (3.3–4.6), 3.2 (2.9–3.7) and 2.3 (2.1–2.6) years, respectively, from smallest to largest quintile (Q1–Q5); [Table 2](#)].

For a subset of cases, there was clinical and experimental data for known prognostic factors. All samples had molecular subtype classification (Talhouk et al.<sup>20</sup>); residual disease was known for 1771 cases, primary chemotherapy treatment for 687, germline *BRCA* mutation status for 904 and nuclear CD8 tumour-infiltrating lymphocyte counts<sup>8</sup> for 1111 ([supplementary Table S11](#), available at *Annals of Oncology* online). When examined by quintile of gene expression score there were differences, as expected, for each of the known prognostic factors, including age and stage that were included in the model ([Table 3](#)). However, in sensitivity analyses, applying the signature to specific

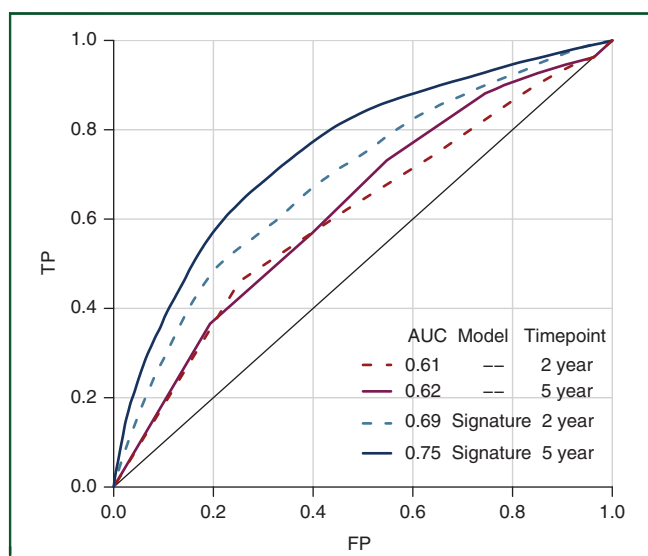
**Table 1.** Hazard ratios and 95% CIs for top five prognostic genes in covariate-adjusted single-gene analyses

Gene	HR (95% CI)	P	Selection	Correlated gene <sup>a</sup>	$r_s$
<i>TAP1</i>	0.84 (0.80–0.87)	$8.3 \times 10^{-18}$	Meta	PSMB9	0.89
<i>ZFH4</i>	1.19 (1.14–1.25)	$1.4 \times 10^{-15}$	Meta	LOC100192378	0.74
<i>CXCL9</i>	0.85 (0.82–0.88)	$1.8 \times 10^{-15}$	Meta and candidate	CXCR6	0.89
<i>FBN1</i>	1.18 (1.13–1.24)	$4.2 \times 10^{-14}$	Candidate	SPARC <sup>b</sup>	0.91
<i>PTGER3</i>	1.18 (1.13–1.24)	$1.2 \times 10^{-13}$	Meta	COL8A1	0.67

CI, confidence interval; HR, hazard ratio.

<sup>a</sup> Most correlated gene according to Spearman's rank correlation coefficient,  $r_s$ , computed in The Cancer Genome Atlas (TCGA) Ovarian Serous Cystadenocarcinoma RNA-seq dataset.

<sup>b</sup> SPARC was included in this project and was less significant.



**Figure 2.** Receiver operator characteristic (ROC) curves for prognostic performance of the gene expression signature in independent high-grade serous ovarian cancer patients (testing data).

There was no overlap between studies or patient data used to develop models (training data) and construct ROC curves and calculate area under the curve (AUC) values shown here (testing data). All models included age and stage as described in Methods section. TP denotes the true positive rate (sensitivity) and FP denotes the false positive rate ( $1 - \text{specificity}$ ).

patient groups, a robustness of stratification was demonstrated, suggesting that the prognostic power of the signature is not explained by the individual factors, residual disease, treatment, *BRCA* status or CD8 score (Figure 3 and supplementary Figures S5–S7, available at *Annals of Oncology* online). The signature score showed modest differences by molecular subtype (supplementary Figure S8, available at *Annals of Oncology* online), and adjusting for molecular subtype in the Cox analysis resulted in only minor changes to the HR estimates for signature quintiles (Table 2). The signature was shown to be prognostic within a homogenous group of 316 stage IIIC cases with no residual disease, within early stage cases (FIGO IA and IB) and within patients whose samples were collected from the omentum (supplementary Figures S9 and S10, available at *Annals of Oncology* online). Analysis of the signature score for paired ovarian and omental tissue from 42 of the cases showed a highly significant Pearson's correlation coefficient,  $r = 0.79$  ( $P = 5.4 \times 10^{-10}$ ; supplementary Figure S11, available at *Annals of Oncology* online).

A gene set enrichment analysis was performed for the 101 genes in the signature, as well as for genes correlated with signature genes achieving  $r^2 > 0.75$  (supplementary Table S12, available at *Annals of Oncology* online). For the correlated gene analysis, the three most significant pathways involved the immune system, including the adaptive immune system and cytokine signalling. A further 10 immune pathways were significantly enriched and included interferon signalling, innate immune system and TCR signalling and antigen presentation pathways. Restricting to the signature genes only, there was also enrichment in the immune system, but the top two pathways were PI-3K (phosphoinositide 3-kinase) cascade and GPCR (G

protein-coupled receptor) ligand binding. Four other pathways were related to the cell cycle and mitosis, with the remaining enriched for fibroblast growth factor receptor (FGFR) and epidermal growth factor receptor (ERBB) signalling, and one pathway related to homologous combination repair.

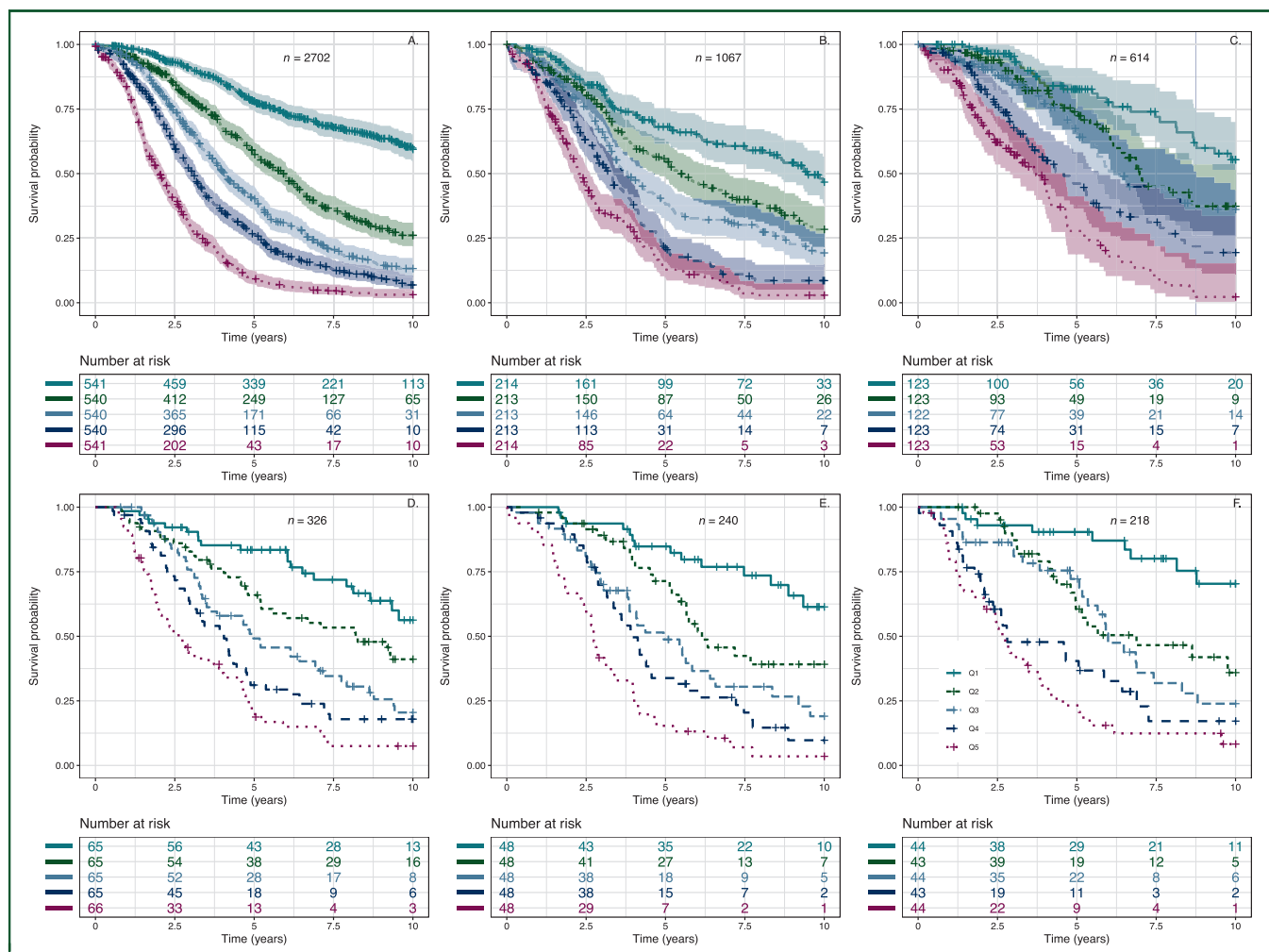
## DISCUSSION

In a large-scale study of patients with HGSOC, we identified a 101-gene expression signature able to predict clinically relevant differences in OS. Using methods that are both economical and applicable to standard clinical sampling techniques, we showed that the signature performs substantially better than age and stage alone for prognosis of both 2- and 5-year OS. The number of patients and samples included in this study is an order of magnitude greater than previous comparable studies of gene expression and OS in patients with HGSOC.<sup>12,21,22</sup> Thus, we have been able to more precisely quantify the prognostic value of gene expression.

We report definitive associations between OS and expression of 276 genes. Of the five most significant genes (*TAP1*, *ZFHX4*, *CXCL9*, *FBN1* and *PTGER3*), four have been previously reported to be associated with survival in HGSOC. The top prognostic gene, *TAP1*, is involved in the antigen-presenting pathway. Expression was reduced in metastatic HGSOC, positively associated with OS,<sup>23</sup> as observed here, and linked to tumour regression in response to treatment.<sup>24</sup> Further, hypomethylation of *TAP1* was associated with improved time to disease recurrence.<sup>25</sup> *CXCL9* is a chemokine that mediates the recruitment of T cells to solid tumours.<sup>26</sup> High expression of intratumoural *CXCL9* was associated with higher OS<sup>27</sup> and higher lymphocytic infiltration, which is also a robust prognostic factor in HGSOC<sup>8,11,28</sup> and a feature of the immunoreactive HGSOC molecular subtype.<sup>11</sup> *CXCL9* has also been proposed as a therapeutic target due to evidence that it inhibits angiogenesis and promotes antitumour adaptive immunity.<sup>29–31</sup> Strikingly, the signature was able to further refine prognostic groups within patients with high tumour-infiltrating lymphocyte counts suggesting that *CXCL9* and *TAP1* expression may be strong indicators of immune competency in HGSOC.

*FBN1* is an extracellular matrix protein previously found to be a biomarker associated with early recurrence in patients with ovarian cancer who are initially sensitive to chemotherapy<sup>32</sup> and strongly correlated with desmoplasia in HGSOC. The prostaglandin E<sub>2</sub> receptor *PTGER3* is expressed in ovarian tumour cells and is associated with relapse-free survival.<sup>33</sup> By contrast, *ZFHX4* does not have previous associations with HGSOC.

Associations between the expression of specific genes in tumour tissues and OS in patients with HGSOC may suggest new drug targets and lead to insights into biological variation in treatment response. For example, cases in the Q5 quintile with the poorest outcome had increased expression of *IGF2*, *FGFR1* and *MYC*, a possible argument for the use of



**Figure 3. Kaplan-Meier curves of overall survival for patients (A) in the training and (B) testing sets.**

Patients were assigned to quintiles (Q1–Q5) of the signature score including age and stage. Shaded areas indicate 95% confidence regions, only included for plots representing larger sample sizes. Because of limited sample size, the following plots represent all such patients in the entire dataset, training or testing: (C) no macroscopic residual disease after debulking surgery, (D) primary chemotherapy treatment  $\geq 4$  cycles of intravenous (IV) carboplatin area under the curve (AUC) 5 or 6 and paclitaxel 135 or 175 mg/m<sup>2</sup> every 3 weeks (actual dose known or presumed), (E) *BRCA1* or *BRCA2* germline mutation and (F) CD8 > 19.

*IGFR1*, *FGFR*, bromodomain (*MYC*) or a combination of PARP and CDK4/6 inhibitors (*MYC*).<sup>34</sup> More immediately, the signature may help clinicians identify patients most in need of intervention, such as patients that could potentially benefit from neoadjuvant chemotherapy (NACT). Alternatively, in clinical trials it could be used to stratify randomization by patients' risk, thereby reducing heterogeneity within subgroups and increasing heterogeneity between

subgroups. The signature will be incorporated into future prospective clinical trials to determine if it can predict response to specific treatments.

Measurement of the signature required standard FFPE tissue used in routine histopathology. In addition, data preprocessing and normalization were conducted on an individual level, thus translatable to a general patient population. That is, 5-year OS prognosis of future patients

**Table 2. Hazard ratios and 95% CIs for quintiles of the gene expression signature score in validation data**

Quintile	N	Deaths	Median survival <sup>a</sup>	HR (95% CI)	Adjusted for age and stage	Adjusted for molecular subtype age and stage
					HR (95% CI)	HR (95% CI)
Q1	214	81	9.47 (8.32 to —)	0.44 (0.33–0.58)	0.34 (0.22–0.55)	0.37 (0.23–0.59)
Q2	213	117	5.38 (4.63–6.97)	0.73 (0.57–0.93)	0.71 (0.55–0.91)	0.74 (0.58–0.96)
Q3	213	145	3.80 (3.34–4.60)			
Q4	213	158	3.23 (2.85–3.68)	1.56 (1.25–1.96)	1.56 (1.24–1.97)	1.56 (1.24–1.96)
Q5	214	179	2.27 (2.09–2.62)	2.23 (1.78–2.78)	2.11 (1.67–2.67)	2.07 (1.63–2.61)

CI, confidence interval; HR, hazard ratio.

<sup>a</sup> Median survival (95% CI) in years for patients in the validation set.



**Table 3. Clinical data for the 3769 patients that passed quality control and the percentage of patients in each quintile of the gene expression score**

	Total	Q1	Q2	Q3	Q4	Q5	P value
N	3769	754	754	753	754	754	
Median survival (years)	4.1	9.5	5.4	3.8	3.2	2.3	
% 5-year survival	41	75	57	39	25	10	
Age median	63	58	57	61	64	70	
Age range	25–89	39–78	25–86	36–82	27–89	39–86	
Age quartile Q1	894	30.8	31.3	20.0	13.4	4.5	$<1 \times 10^{-50}$
Age quartile Q2	838	21.5	20.0	22.9	21.2	14.3	
Age quartile Q3	961	16.0	20.2	21.4	23.6	18.7	
Age quartile Q4	1076	13.5	10.4	16.4	21.3	38.5	
FIGO stage I/II	607	97.4	2.6	0.0	0.0	0.0	$<1 \times 10^{-50}$
FIGO stage III/IV	3067	3.8	23.0	24.1	24.4	24.6	
Primary chemo <sup>a</sup> 1	136	16.2	22.1	23.5	19.1	19.1	0.163
Primary chemo <sup>a</sup> 2	190	16.3	20.0	21.6	22.1	20.0	
Primary chemo <sup>a</sup> 3	361	11.1	16.9	22.4	20.5	29.1	
Residual disease: No	614	32.4	22.1	17.8	15.5	12.2	$<1 \times 10^{-50}$
Residual disease: Yes	1157	6.0	19.2	24.1	24.5	26.2	
Germline BRCA1 mutation	130	23.8	31.5	26.2	11.5	6.9	$2.22 \times 10^{-7}$
Germline BRCA2 mutation	71	28.2	26.8	18.3	18.3	8.5	
Germline no BRCA1/2 mutation	663	19.6	16.7	18.7	20.7	24.3	
CD8 TIL score 0	192	19.8	14.6	12.5	21.4	31.8	$2.46 \times 10^{-14}$
CD8 TIL score 1–2	186	18.3	14.0	18.8	21.5	27.4	
CD8 TIL score 3–19	515	19.8	24.1	20.8	17.9	17.5	
CD8 TIL score >19	218	34.4	31.2	16.5	11.5	6.4	
Molecular subtype C1.MES	1105	5.4	10.4	20.7	27.4	36.0	$<1 \times 10^{-50}$
Molecular subtype C2.IMM	907	23.2	28.8	21.2	16.2	10.7	
Molecular subtype C4.DIF	1144	32.6	25.5	17.9	12.8	11.2	
Molecular subtype C5.PRO	613	18.1	14.0	20.7	25.8	21.4	
FIGO stage IA and IB	111	96.4	3.6	0.0	0.0	0.0	$<1 \times 10^{-50}$
FIGO stage IIIC	1979	3.1	23.7	24.6	24.1	24.6	$<1 \times 10^{-50}$
FIGO stage IIIC residual disease: No	316	6.3	31.0	24.4	20.9	17.4	$6.24 \times 10^{-45}$
FIGO stage IIIC residual disease: Yes	846	2.6	21.5	25.3	24.6	26.0	

Q1 is the quintile with the best survival and Q5 the worst survival. Samples with missing data are reported in [supplementary Table S11](#), available at *Annals of Oncology* online. P values for BRCA1/2 mutation status were calculated for BRCA1 or BRCA2 mutation versus no mutation.

FIGO, International Federation of Gynecology and Obstetrics; TIL, tumour-infiltrating lymphocyte.

<sup>a</sup> Treatment: 1 = known to have received first-line chemotherapy treatment of  $\geq 4$  cycles of IV carboplatin AUC 5 or 6 and paclitaxel 135 or 175 mg/m<sup>2</sup> every 3 weeks. 2 = known to have received first-line chemotherapy treatment of  $\geq 4$  cycles of IV carboplatin and paclitaxel three times weekly but at doses presumed to be carboplatin AUC 5 or 6 and paclitaxel 135 or 175 mg/m<sup>2</sup>. 3 = all remaining cases with chemo regimens that do not fit criteria 1 or 2 and include unknown or no chemotherapy.

can be evaluated against the patient population reported here by (i) following the same steps described here for generating the normalized gene expression data, (ii) computing an individual signature score and (iii) assigning an HR based on the score or comparing it with the reported quintiles ([supplementary Material](#), available at *Annals of Oncology* online). NanoString gene expression is highly reproducible as seen by our quality control metrics ([supplementary Material](#), available at *Annals of Oncology* online) and the FDA approval of the Prosigna test for breast cancer.

The question of heterogeneity by ancestry or ethnicity was beyond the scope of this study but should be pursued in future research. Another important question is whether molecular subtype can improve biomarker performance. A substantial proportion of signature genes were identified by the subtype-adjusted meta-analysis, suggesting that the strong performance of the signature is not solely attributable to differences among molecular subtypes. In addition, all of the individual genes used in the molecular subtype classification were included in development of the signature.

Although the cases received chemotherapy, the FFPE samples used in this study were chemo-naïve, as few

patients had NACT during the calendar period in which these samples were collected. Because the signature appears to be prognostic in omentum samples, future studies may assess the value in NACT patients, using pretreatment omental biopsies or post-treatment tumour samples. Future work will also address if the signature can predict platinum-refractory patients.

We have developed a robust prognostic signature for HGSOC that can be used to stratify patients and identify those in need of alternative treatments. Gene set enrichment analysis applied to the signature indicates an important role for the immune system in OS and supports further investigation of immune therapy in ovarian cancer. More generally, the identification here of high-confidence prognostic genes may lead to new hypotheses for targeted treatments.

#### ACKNOWLEDGEMENTS

We thank all the study participants who contributed to this study and all the researchers, clinicians and technical and administrative staff who have made this work possible. This project received technical and data management support from OVCARE's core units, including the Cheryl Brown Ovarian Cancer Outcomes Unit and the Genetic Pathology

Evaluation Centre, and statistical analysis support from the Biostatistics Core of the Norris Comprehensive Cancer Center. The AOV study recognizes the valuable contributions from Mie Konno, Shuhong Liu, Michelle Darago, Faye Chambers and the staff at the Tom Baker Cancer Centre Translational Laboratories. We thank Olivier Tredan and Pierre Heudel as investigators on the TRIO14 study and Sandrine Berge-Montamat as assistant for clinical research. The Australian Ovarian Cancer Study gratefully acknowledges additional support from Ovarian Cancer Australia and the Peter MacCallum Foundation. The AOCS also acknowledges the cooperation of the participating institutions in Australia and acknowledges the contribution of the study nurses, research assistants and all clinical and scientific collaborators to the study. The complete AOCS Study Group can be found at [www.aocstudy.org](http://www.aocstudy.org). We thank all of the women who participated in these research programs.

## FUNDING

This work was funded by the National Institutes of Health/National Cancer Institute (NCI) Grants to SJR [grant number R01CA172404] and J.A. Doherty and MAR [grant number R01CA168758], the Canadian Institutes for Health Research (Proof-of-Principle I program, no grant number applicable) and the United States Department of Defense Ovarian Cancer Research Program [grant number OC110433]. J. Millstein and SJR received support from National Institutes of Health/National Cancer Institute [grant number P30CA014089] and J. Millstein received support from NIH/National Cancer Institute award number P01CA196569. MSA receives funding from the Janet D. Cottrelle Foundation Scholar's program managed by the BC Cancer Foundation (no grant number applicable). JG was partially supported by the National Institutes of Health/National Cancer Institute [grant number P30CA034196]. CW was a Career Enhancement Awardee of the Mayo Clinic SPOR in Ovarian Cancer [grant number P50 CA136393]. MJH received funding from Cancer Australia (1067110), DGH receives support from the Dr Chew Wei Memorial Professorship in Gynecologic Oncology, (no grant number applicable) the Canada Research Chairs program (Research Chair in Molecular and Genomic Pathology, no grant number applicable), and the Janet D. Cottrelle Foundation (no grant number applicable). MW receives funding from the European Union's Horizon 2020 European Research Council Programme [grant number H2020 BRCA-ERC] under Grant Agreement No. 742432, as well as from the charity The Eve Appeal (<https://eveappeal.org.uk/>, no grant number applicable) and support from the National Institute for Health Research (NIHR, no grant number applicable) and the University College London Hospitals (UCLH) Biomedical Research Centre (no grant number applicable). GEK is supported by the Miriam and Sheldon Adelson Medical Research Foundation (no grant number applicable). BYK is funded by the American Cancer Society Early Detection Professorship [grant number SIOP-06-258-01-COUN] and the National Center for Advancing Translational Sciences

(NCATS) [grant number UL1TR000124]. HRH is supported by the National Institutes of Health/National Cancer Institute [grant number K22 CA193860]. OVCARE (including the VAN study) receives core funding through the BC Cancer Foundation (no grant number applicable) and The VGH+UBC Hospital Foundation (authors AT, BG, DGH and MSA, no grant number applicable). The AOV study is supported by the Canadian Institutes of Health Research [grant number MOP-86727]. The Gynaecological Oncology Biobank at Westmead, a member of the Australasian Biospecimen Network-Oncology group, was funded by the National Health and Medical Research Council Enabling [grant numbers ID 310670, ID 628903] and the Cancer Institute NSW [grant numbers ID 12/RIG/1-17, 15/RIG/1-16]. The Australian Ovarian Cancer Study Group was supported by the U.S. Army Medical Research and Materiel Command [grant number DAMD17-01-1-0729], The Cancer Council Victoria, Queensland Cancer Fund, The Cancer Council New South Wales, The Cancer Council South Australia, The Cancer Council Tasmania and The Cancer Foundation of Western Australia (Multi-State Applications 191, 211 and 182) and the National Health and Medical Research Council of Australia [grant numbers NHMRC, ID199600, ID400413, ID400281]. BriTROC-1 was funded by Ovarian Cancer Action (to IAM and JDB) [grant number 006] and supported by Cancer Research UK [grant numbers A15973, A15601, A18072, A17197, A19274, A19694] and the National Institute for Health Research Cambridge and Imperial Biomedical Research Centres (no grant number applicable). SEARCH was supported by Cancer Research UK [grant number A16561]. The University of Cambridge receives salary support for PDPP from the NHS Clinical Academic Reserve (no grant number applicable). Samples from the Mayo Clinic were collected and provided with support of the National Institutes of Health/National Cancer Institute (NCI) P50 CA136393 (ELG, GLK, SHK, MES). S. Orsulic was funded by the Department of Defense Award W81XWH-17-1-0144. MRC Clinical Trials Unit at UCL receives funding from The Eve Appeal (The Oak Foundation) with investigators supported by the National Institute for Health Research University College London Hospitals Biomedical Research Centre and MRC core funding (MR\_UU\_12023).

## DISCLOSURE

BYK served on Invitae Corporation's Advisory Board from 2017 to 2018. IAM has acted on the Advisory Boards for AstraZeneca, Clovis Oncology, Tesaro, Carrick Therapeutics and Takeda. His institution receives funding from AstraZeneca. RG is on the Advisory Boards for AstraZeneca, Tesaro, Clovis and Immunogen and does consultancy work for SOTIO. She has received support to attend conferences from AstraZeneca, Roche and Tesaro. Her institution has received research funding from Boehringer Ingelheim and Lilly/Ignyta and she is the national co-ordinating investigator for the UK for trials sponsored by AstraZeneca and Tesaro and site principal investigator for trials sponsored by AstraZeneca, Tesaro, Immunogen, Pfizer, Lilly and Clovis.

PAF has received grants from Novartis, BioNtech and Cepheid as well as personal fees from Novartis, Roche, Pfizer, Celgene, Daiichi-Sankyo, TEVA, Astra Zeneca, Merck Sharp & Dohme, Myelo Therapeutics, MacroGenics, Eisai and Puma during the conduct of the study. JDB has acted on Advisory Boards for AstraZeneca and has received support from GSK to attend conferences. His institution receives funding from AstraZeneca and Aprea. UM has shares in Abcodia Ltd. Sandra Orsulic and Beth Y. Karlan have patents on predictive gene signatures in ovarian cancer (US010253368 and EU2908913). All remaining authors have declared no conflicts of interest.

## REFERENCES

- Vaughan S, Coward JL, Bast Jr RC, et al. Rethinking ovarian cancer: recommendations for improving outcomes. *Nat Rev Cancer*. 2011;11:719–725.
- Torre LA, Trabert B, DeSantis CE, et al. Ovarian cancer statistics, 2018. *CA Cancer J Clin*. 2018;68:284–296.
- Bowtell DD, Bohm S, Ahmed AA, et al. Rethinking ovarian cancer II: reducing mortality from high-grade serous ovarian cancer. *Nat Rev Cancer*. 2015;15:668–679.
- du Bois A, Reuss A, Pujade-Lauraine E, et al. Role of surgical outcome as prognostic factor in advanced epithelial ovarian cancer: a combined exploratory analysis of 3 prospectively randomized phase 3 multi-center trials: by the Arbeitsgemeinschaft Gynaekologische Onkologie Studiengruppe Ovarialkarzinom (AGO-OVAR) and the Groupe d'Investigateurs Nationaux Pour les Etudes des Cancers de l'Ovaire (GINECO). *Cancer*. 2009;115:1234–1244.
- Bolton KL, Chenevix-Trench G, Goh C, et al. Association between BRCA1 and BRCA2 mutations and survival in women with invasive epithelial ovarian cancer. *JAMA*. 2012;307:382–390.
- Candido-dos-Reis FJ, Song H, Goode EL, et al. Germline mutation in BRCA1 or BRCA2 and ten-year survival for women diagnosed with epithelial ovarian cancer. *Clin Cancer Res*. 2015;21:652–657.
- Goode EL, Block MS, Kalli KR, et al. Dose-response association of CD8<sup>+</sup> tumor-infiltrating lymphocytes and survival time in high-grade serous ovarian cancer. *JAMA Oncol*. 2017;3:e173290.
- Zhang L, Conejo-Garcia JR, Katsaros D, et al. Intratumoral T cells, recurrence, and survival in epithelial ovarian cancer. *N Engl J Med*. 2003;348:203–213.
- Pujade-Lauraine E, Ledermann JA, Selle F, et al. Olaparib tablets as maintenance therapy in patients with platinum-sensitive, relapsed ovarian cancer and a BRCA1/2 mutation (SOLO2/ENGOT-Ov21): a double-blind, randomised, placebo-controlled, phase 3 trial. *Lancet Oncol*. 2017;18:1274–1284.
- Moore K, Colombo N, Scambia G, et al. Maintenance olaparib in patients with newly diagnosed advanced ovarian cancer. *N Engl J Med*. 2018;379:2495–2505.
- Tothill RW, Tinker AV, George J, et al. Novel molecular subtypes of serous and endometrioid ovarian cancer linked to clinical outcome. *Clin Cancer Res*. 2008;14:5198–5208.
- Cancer Genome Atlas Research Network. Integrated genomic analyses of ovarian carcinoma. *Nature*. 2011;474:609–615.
- Bonome T, Levine DA, Shih J, et al. A gene signature predicting for survival in suboptimally debulked patients with ovarian cancer. *Cancer Res*. 2008;68:5478–5486.
- Karlan BY, Dering J, Walsh C, et al. POSTN/TGFBI-associated stromal signature predicts poor prognosis in serous epithelial ovarian cancer. *Gynecol Oncol*. 2014;132:334–342.
- Konecny GE, Haluska P, Janicke F, et al. A phase II, multicenter, randomized, double-blind, placebo-controlled trial of ganitumab or placebo in combination with carboplatin/paclitaxel as front-line therapy for optimally debulked primary ovarian cancer: the TRIO14 trial. *J Clin Oncol*. 2014;32:5529.
- Konecny GE, Wang C, Hamidi H, et al. Prognostic and therapeutic relevance of molecular subtypes in high-grade serous ovarian cancer. *J Natl Cancer Inst*. 2014;106:dju249.
- Millstein J, Volfson D. Computationally efficient permutation-based confidence interval estimation for tail-area FDR. *Front Genet*. 2013;4:179.
- Talhouk A, Kommoss S, Mackenzie R, et al. Single-patient molecular testing with NanoString nCounter data using a reference-based strategy for batch effect correction. *PLoS One*. 2016;11:e0153844.
- Edgar R, Domrachev M, Lash AE. Gene Expression Omnibus: NCBI gene expression and hybridization array data repository. *Nucleic Acids Res*. 2002;30:207–210.
- Talhouk A, George J, Wang C, et al. Development and validation of the gene-expression Predictor of high-grade-serous Ovarian carcinoma molecular subTYPE (ProTYPE). *Clin Cancer Res*. 2020. <https://doi.org/10.1158/1078-0432.CCR-20-0103>.
- Jin C, Xue Y, Li Y, et al. A 2-protein signature predicting clinical outcome in high-grade serous ovarian cancer. *Int J Gynecol Cancer*. 2018;28:51–58.
- Mankoo PK, Shen R, Schultz N, et al. Time to recurrence and survival in serous ovarian tumors predicted from integrated genomic profiles. *PLoS One*. 2011;6:e24709.
- Nymoen DA, Hetland Falkenthal TE, Holth A, et al. Expression and clinical role of chemoresponse-associated genes in ovarian serous carcinoma. *Gynecol Oncol*. 2015;139:30–39.
- Jimenez-Sanchez A, Memon D, Pourpe S, et al. Heterogeneous tumor-immune microenvironments among differentially growing metastases in an ovarian cancer patient. *Cell*. 2017;170:927–938.e20.
- Wang C, Cicek MS, Charbonneau B, et al. Tumor hypomethylation at 6p21.3 associates with longer time to recurrence of high-grade serous epithelial ovarian cancer. *Cancer Res*. 2014;74:3084–3091.
- Gorbachev AV, Kobayashi H, Kudo D, et al. CXCL9 chemokine ligand 9/monokine induced by IFN- $\gamma$  production by tumor cells is critical for T cell-mediated suppression of cutaneous tumors. *J Immunol*. 2007;178:2278–2286.
- Bronger H, Singer J, Windmuller C, et al. CXCL9 and CXCL10 predict survival and are regulated by cyclooxygenase inhibition in advanced serous ovarian cancer. *Br J Cancer*. 2016;115:553–563.
- Ovarian Tumor Tissue Analysis (OTTA) Consortium, Goode EL, Block MS, et al. Dose-response association of CD8<sup>+</sup> tumor-infiltrating lymphocytes and survival time in high-grade serous ovarian cancer. *JAMA Oncol*. 2017;3:e173290.
- Tokunaga R, Zhang W, Naseem M, et al. CXCL9, CXCL10, CXCL11/CXCR3 axis for immune activation — a target for novel cancer therapy. *Cancer Treat Rev*. 2018;63:40–47.
- Xiao P, Guo Y, Zhang H, et al. Myeloid-restricted ablation of Shp2 restrains melanoma growth by amplifying the reciprocal promotion of CXCL9 and IFN- $\gamma$  production in tumor microenvironment. *Oncogene*. 2018;37:5088–5100.
- Zhang R, Tian L, Chen LJ, et al. Combination of MIG (CXCL9) chemokine gene therapy with low-dose cisplatin improves therapeutic efficacy against murine carcinoma. *Gene Ther*. 2006;13:1263–1271.
- Zhang W, Ota T, Shridhar V, et al. Network-based survival analysis reveals subnetwork signatures for predicting outcomes of ovarian cancer treatment. *PLoS Comput Biol*. 2013;9:e1002975.
- Reinartz S, Finkernagel F, Adhikary T, et al. A transcriptome-based global map of signaling pathways in the ovarian cancer microenvironment associated with clinical outcome. *Genome Biol*. 2016;17:108.
- Konecny GE. Combining PARP and CDK4/6 inhibitors in MYC driven ovarian cancer. *EBioMedicine*. 2019;43:9–10.

**APPENDIX 1. AOCS STUDY GROUP****Management Group**

**D Bowtell**<sup>1,3,4,5,6</sup>, **G Chenevix-Trench**<sup>2</sup>, A Green<sup>2</sup>, **P Webb**<sup>2</sup>, **A DeFazio**<sup>7,8,9</sup>, D Gertig<sup>10</sup>

**Project and Data Managers**

**N Traficante**<sup>1</sup>, **S Fereday**<sup>1</sup>, S Moore<sup>2</sup>, J Hung<sup>7</sup>, K Harrap<sup>2</sup>, T Sadkowsky<sup>2</sup>, N Pandeya<sup>2</sup>

**Research Nurses and Assistants**

M Malt<sup>2</sup>, A Mellon<sup>11</sup>, R Robertson<sup>11</sup>, T Vanden Bergh<sup>12</sup>, M Jones<sup>12</sup>, P Mackenzie<sup>12</sup>, J Maidens<sup>13</sup>, K Nattress<sup>14</sup>, YE Chiew<sup>7</sup>, A Stenlake<sup>9</sup>, H Sullivan<sup>9</sup>, B Alexander<sup>2</sup>, P Ashover<sup>2</sup>, S Brown<sup>2</sup>, T Corrish<sup>2</sup>, L Green<sup>2</sup>, L Jackman<sup>2</sup>, K Ferguson<sup>2</sup>, K Martin<sup>2</sup>, A Martyn<sup>2</sup>, B Ranieri<sup>2</sup>, J White<sup>15</sup>, V Jayde<sup>16</sup>, P Mamers<sup>17</sup>, L Bowes<sup>1</sup>, L Galletta<sup>1</sup>, D Giles<sup>1</sup>, **J Hendley**<sup>1</sup>, K Alsop<sup>1</sup>, T Schmidt<sup>18</sup>, H Shirley<sup>18</sup>, C Ball<sup>19</sup>, C Young<sup>19</sup>, S Viduka<sup>18</sup>, Hoa Tran<sup>18</sup>, Sanela Bilic<sup>18</sup>, Lydia Glavinias<sup>18</sup>, Julia Brooks<sup>20</sup>

**Clinical and Scientific Collaborators**

R Stuart-Harris<sup>21</sup>, F Kirsten<sup>22</sup>, J Rutovitz<sup>23</sup>, P Clingan<sup>24</sup>, A Glasgow<sup>24</sup>, A Proietto<sup>11</sup>, S Braye<sup>11</sup>, G Otton<sup>11</sup>, J Shannon<sup>25</sup>, T Bonaventura<sup>26</sup>, J Stewart<sup>26</sup>, S Begbie<sup>27</sup>, M Friedlander<sup>28</sup>, D Bell<sup>13</sup>, S Baron-Hay<sup>13</sup>, A Ferrier<sup>13,a</sup>, G Gard<sup>13</sup>, D Nevell<sup>13</sup>, N Pavlakis<sup>13</sup>, S Valmadre<sup>13</sup>, B Young<sup>13</sup>, C Camaris<sup>12</sup>, R Crouch<sup>12</sup>, L Edwards<sup>12</sup>, N Hacker<sup>12</sup>, D Marsden<sup>12</sup>, G Robertson<sup>12</sup>, P Beale<sup>14</sup>, J Beith<sup>14</sup>, J Carter<sup>14</sup>, C Dalrymple<sup>14</sup>, R Houghton<sup>14</sup>, P Russell<sup>14</sup>, M Links<sup>29</sup>, J Grygiel<sup>30</sup>, J Hill<sup>31</sup>, A Brand<sup>8,32</sup>, K Byth<sup>32</sup>, R Jaworski<sup>33</sup>, P Harnett<sup>8,32</sup>, R Sharma<sup>8,33</sup>, G Wain<sup>32</sup>, B Ward<sup>34</sup>, D Papadimos<sup>34</sup>, A Crandon<sup>35</sup>, M Cummings<sup>35</sup>, K Horwood<sup>35</sup>, A Obermair<sup>35</sup>, L Perin<sup>35</sup>, D Wyld<sup>35</sup>, J Nicklin<sup>35,36</sup>, M Davy<sup>15</sup>, MK Oehler<sup>15</sup>, C Hall<sup>15</sup>, T Dodd<sup>15</sup>, T Healy<sup>37</sup>, K Pittman<sup>37</sup>, D Henderson<sup>37</sup>, J Miller<sup>39</sup>, J Pierdes<sup>39</sup>, P Blomfield<sup>16</sup>, D Challis<sup>16</sup>, R McIntosh<sup>16</sup>, A Parker<sup>16</sup>, B Brown<sup>40</sup>, R Rome<sup>40</sup>, D Allen<sup>41</sup>, P Grant<sup>41</sup>, S Hyde<sup>41</sup>, R Laurie<sup>41</sup>, M Robbie<sup>41</sup>, D Healy<sup>17</sup>, T Jobling<sup>17</sup>, T Manolitsas<sup>17</sup>, J McNealage<sup>17</sup>, P Rogers<sup>17</sup>, B Susil<sup>17</sup>, E Sumithran<sup>17</sup>, I Simpson<sup>17</sup>, K Phillips<sup>1</sup>, D Rischin<sup>1</sup>, S Fox<sup>1</sup>, D Johnson<sup>1</sup>, S Lade<sup>1</sup>, M Loughrey<sup>1</sup>, N O'Callaghan<sup>1</sup>, W Murray<sup>1</sup>, P Waring<sup>3</sup>, V Billson<sup>42</sup>, J Pyman<sup>42</sup>, D Neesham<sup>42</sup>, M Quinn<sup>42</sup>, C Underhill<sup>43</sup>, R Bell<sup>44</sup>, LF Ng<sup>45</sup>, R Blum<sup>46</sup>, V Ganju<sup>47</sup>, I Hammond<sup>19</sup>, Y Leung<sup>19</sup>, A McCartney<sup>19, a</sup>, M Buck<sup>48</sup>, I Haviv<sup>49</sup>, D Purdie<sup>2</sup>, D Whiteman<sup>2</sup>, N Zeps<sup>18</sup>

<sup>1</sup>Peter MacCallum Cancer Centre, Melbourne, Australia; <sup>2</sup>QIMR Berghofer Medical Research Institute, Brisbane, Australia; <sup>3</sup>Department of Pathology, University of Melbourne, Parkville, Australia; <sup>4</sup>Sir Peter MacCallum Cancer Centre Department of Oncology, University of Melbourne, Parkville, Australia; <sup>5</sup>Department of Biochemistry and Molecular Biology, University of Melbourne, Parkville, Australia;

<sup>6</sup>Ovarian Cancer Action Research Centre, Department of Surgery and Cancer, Imperial College London, London, UK; <sup>7</sup>Centre for Cancer Research, The Westmead Institute for Medical Research, Sydney, Australia; <sup>8</sup>The University of Sydney, Sydney, Australia; <sup>9</sup>Department of Gynaecological Oncology, Westmead Hospital, Sydney, Australia; <sup>10</sup>Melbourne School of Population and Global Health, University of Melbourne, Parkville, Australia; <sup>11</sup>John Hunter Hospital, Lookout Road, New Lambton, Australia; <sup>12</sup>Royal Hospital for Women, Barker Street, Randwick, Australia; <sup>13</sup>Royal North Shore Hospital, St Leonards, Australia; <sup>14</sup>Royal Prince Alfred Hospital, Camperdown, Australia; <sup>15</sup>Royal Adelaide Hospital, North Terrace, Adelaide, Australia; <sup>16</sup>Royal Hobart Hospital, Hobart, Australia; <sup>17</sup>Monash Medical Centre, Clayton, Australia; <sup>18</sup>Western Australian Research Tissue Network (WARTN), St John of God Pathology, Osborne Park, Australia; <sup>19</sup>Women and Infant's Research Foundation, King Edward Memorial Hospital, Subiaco, Australia; <sup>20</sup>St John of God Hospital, Subiaco, Australia; <sup>21</sup>Canberra Hospital, Yamba Drive, Garran, Australia; <sup>22</sup>Bankstown Cancer Centre, Bankstown Hospital, Bankstown, Australia; <sup>23</sup>Northern Haematology & Oncology Group, Integrated Cancer Centre, Wahroonga, Australia; <sup>24</sup>Illawarra Shoalhaven Local Health District, Wollongong Hospital, Wollongong, Australia; <sup>25</sup>Nepean Hospital, Kingswood, Australia; <sup>26</sup>Newcastle Mater Misericordiae Hospital, Waratah, Australia; <sup>27</sup>Port Macquarie Base Hospital, Port Macquarie, Australia; <sup>28</sup>Prince of Wales Clinical School, University of New South Wales, Australia; <sup>29</sup>St George Hospital, Kogarah, Australia; <sup>30</sup>St Vincent's Hospital, Darlinghurst, Australia; <sup>31</sup>Wagga Wagga Base Hospital, Wagga Wagga, Australia; <sup>32</sup>Crown Princess Mary Cancer Centre, Westmead Hospital, Westmead, Sydney, Australia; <sup>33</sup>Department of Pathology, Westmead Clinical School, Westmead Hospital, The University of Sydney, Australia; <sup>34</sup>Mater Misericordiae Hospital, Raymond Terrace, South Brisbane, Australia; <sup>35</sup>The Royal Brisbane and Women's Hospital, Butterfield Street, Herston, Australia; <sup>36</sup>Wesley Hospital, Auchenflower, Australia; <sup>37</sup>Burnside Hospital, Toorak Gardens, Australia; <sup>38</sup>Flinders Medical Centre, Bedford Park, Australia; <sup>39</sup>Queen Elizabeth Hospital, Woodville South, Australia; <sup>40</sup>Freemasons Hospital, East Melbourne, Australia; <sup>41</sup>Mercy Hospital for Women, Heidelberg, Australia; <sup>42</sup>The Royal Women's Hospital, Parkville, Australia; <sup>43</sup>Border Medical Oncology, Wodonga, Australia; <sup>44</sup>Andrew Love Cancer Centre, Geelong, Australia; <sup>45</sup>Ballarat Base Hospital, Ballarat, Australia; <sup>46</sup>Bendigo Health Care Group, Bendigo, Australia; <sup>47</sup>Peninsula Health, Frankston, Australia; <sup>48</sup>Mount Hospital, Perth, Australia; <sup>49</sup>Faculty of Medicine, Bar-Ilan University, Safed, Israel

The seven people in bold are named authors on the manuscript.

<sup>a</sup>Deceased.